

A gorgeous, dog-friendly townhouse in the heart of St Ives. Arranged over three floors, this spacious home has a welcoming and inviting cool fusion of modern scandi and beach chic. Offering light and airy accommodation, perfect for a family or gathering for up to eight guests and located just a two minute stroll from St Ives' shops, restaurants, bars and beaches.



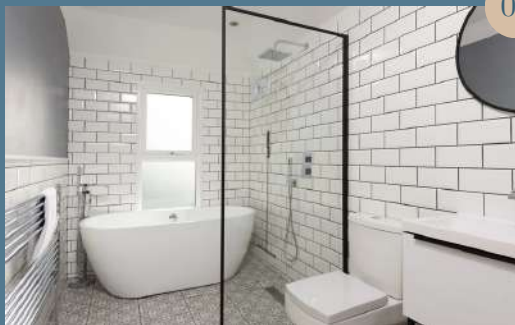
The ground floor is the heart of Spindrift with a charming cottage kitchen, fully equipped with top of the range appliances, underfloor heating, as well as a welcome area which leads outside to a crucial de-salt and sand area with hot/cold rain shower. The area also provides wetsuit drying space and board storage areas.



SPINDRIFT



01

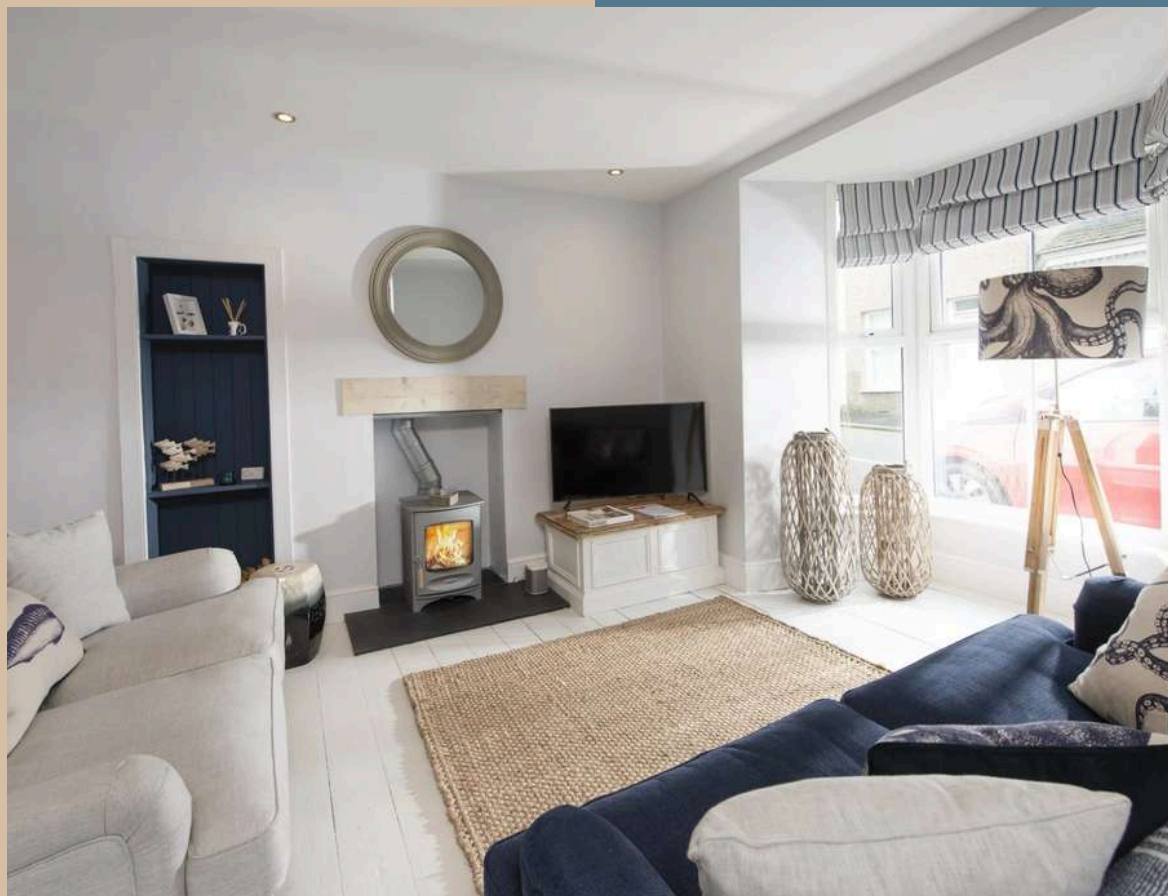


Spindrift offers a beautifully restored, light-filled living and dining space with original features, a contemporary wood burner, and a Sonos system for cosy nights in. Gather around the large dining table under feature lighting for memorable meals with family and friends. The first floor boasts a luxurious king-sized master bedroom with a desk/makeup area, a twin room with local artwork, and a stunning Georgian-chic bathroom with a deep freestanding bath and rain shower.

02



Just off this level, a sun-trap balcony is perfect for morning coffee or evening cocktails. The second floor features a Cream Cornwall-styled double with sea glimpses, a twin room, and a sleek wet room, making Spindrift ideal for two families or those needing extra space. With fully upgraded WiFi, you can easily stay connected, whether streaming or checking in with work.



Book now



01736 396609



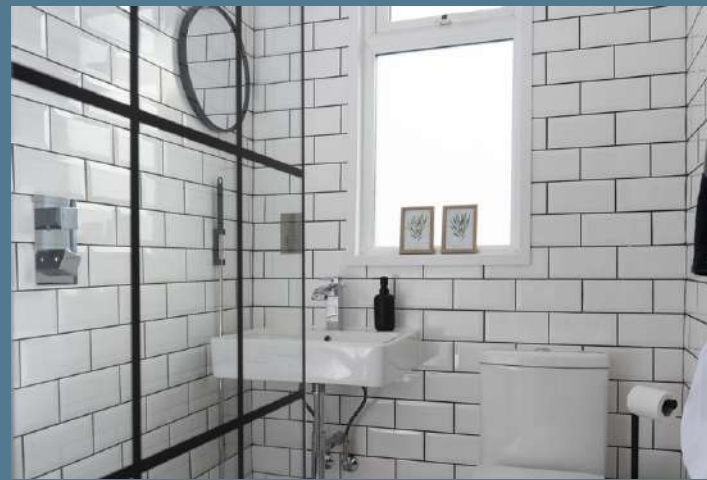
hello@sandytoestays.co.uk



[Spindrift](#)



St Ives



sandy toes
Stays